



LOIL

Zams Christophorus 5

Tyrol

Version 1.0

by oe3gsu



Austrian X-Plane Design Group

Content:

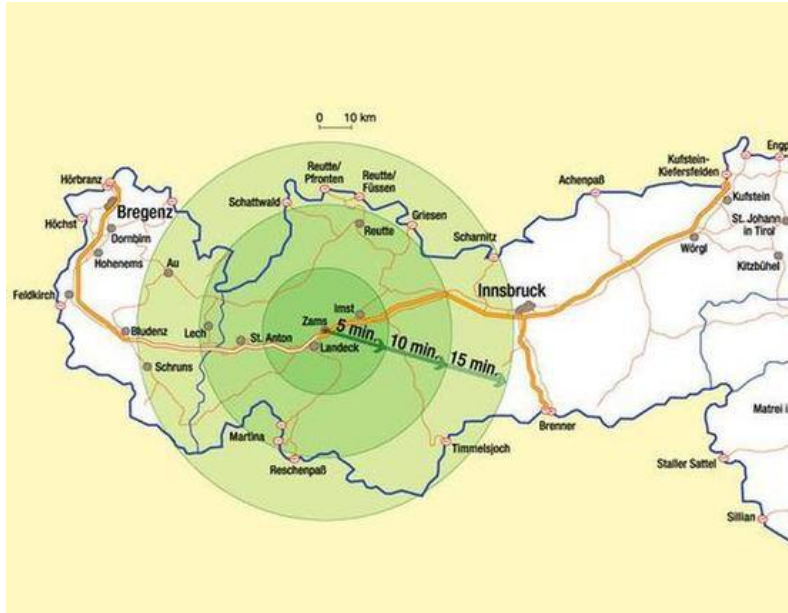
1. The Original	3
2. The scenery	4
3. Functions (summary)	5
4. Installation	5
5. Recommended settings	5
6. Required Software	5
7. Used Libraries	6
8. Recommended addons	6
9. Credits	6
10. Betatester-Team	6
11. License terms	7

Austrian X-Plane Design Group

1. The Original

5 was placed in service in the winter of 1987 in western Tyrol for faster access to major ski areas. The then Christopher 1a - called emergency helicopter was stationed in a makeshift tent in Landeck in the "Pontlatzkaserne".

After the first winter was clear that in Tyrol can not be dispensed with its own emergency helicopter and then the helicopter under the name Christopher 5 from 1988 - initially only in the winter months - fix stationed in Landeck.



To meet the needs of the summer tourism, Christophorus 5 was operational from 1991 during the summer months in Landeck. Finally, in 1.1.1993 the gaps in the spring and autumn are closed - since then Christophorus 5 is open all year stationed in Tyrol and has established itself as the base for maximum service frequency and with one of the widest application spectra.

1997 left the Christophorus

5 team their "emergency shelter" in the Pontlatzkaserne and moved into their newly built Heliport in Zams.

(Source:

Austrian X-Plane Design Group

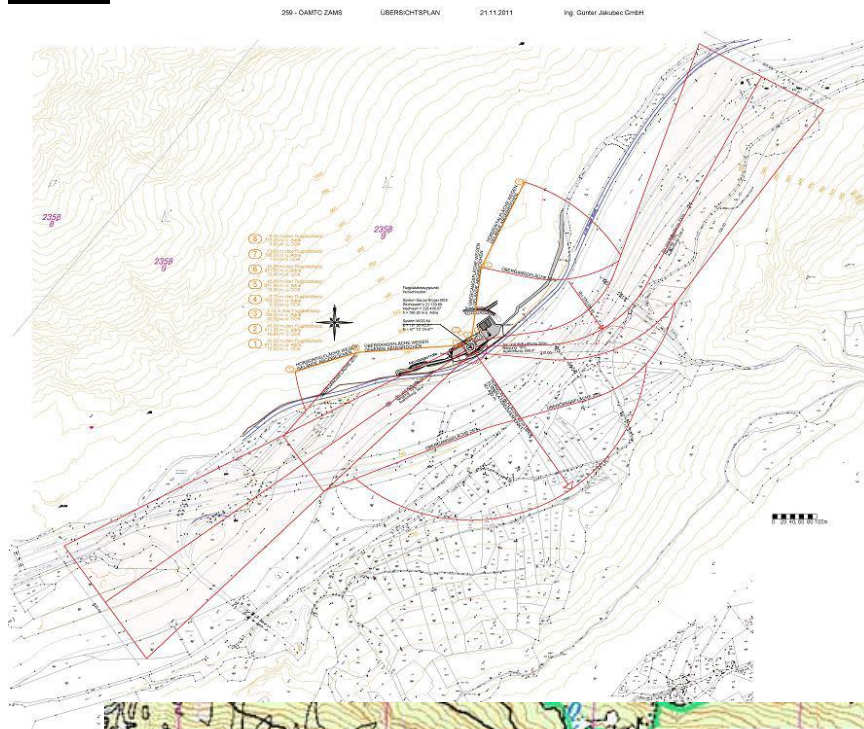
2. The scenery

The scene is based on publicly available information and pictures

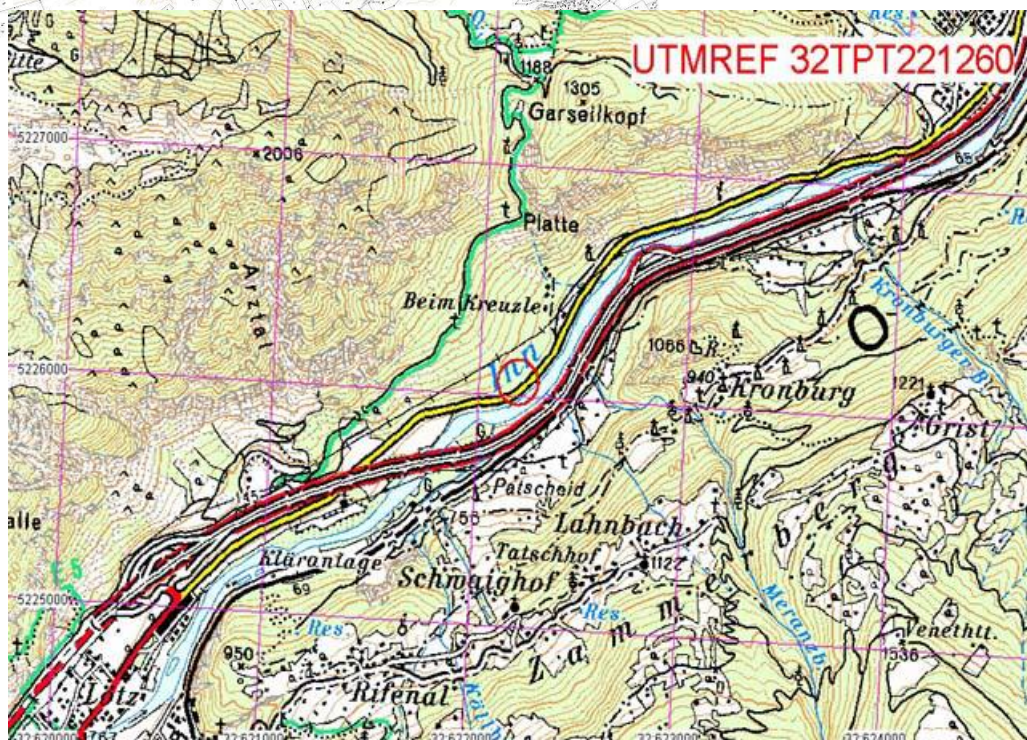
All buildings have been completely rebuilt.

The scenery includes night textures and realistic lighting (Only X-Plane 10).

Charts



(Source:
<http://old.helipad.org/app/default.asp?padId=237>)





Austrian X-Plane Design Group

3. Functions (summary)

- Photorealistic Scenery
- Compatibel to OSM+autogen V6.0 from PliotBalu
- realistic ground textures at the Heliport and the surrounding
- Parkpositions conform to the charts
- realistic lighting of the Helipad
- realistic Markings at the Heliport and the apron
- nighttextures
- Winter - Textures
- realistic lighting *)

*) X-Plane 10+ only!

4. Installation

Just copy the folder " LOIL CH.5 Zams 1.0" in the compressed file after unpacking in the "Custom Scenery" - folder.

directory structure:

```
<X-Plane-Verzeichnis>/
  Custom Scenery /
    LOIL CH.5 Zams 1.0 /
      Earth nav data and others)
```

and restart X-Plane.

5. Recommended settings

To visualize all light effects, HDR should be activated. The higher the settings for "texture resolution" and "airport detail" the better the quality of the scenery but the more affect on the FPS ratio.

"runways follow terrain contours" has to be OFF!

6. Required Software

X-Plane® Version 10.30+ or 9.7



Austrian X-Plane Design Group

7. Used Libraries

none

8. Recommended addons

Although the scenery will work without any addons, we recommend to use the following ones for the whole experience (pictures taken with addons installed):

OSM Europe osm+autogen by PilotBalu,

Download: http://simheaven.com/?page_id=23

to have streets and buildings from OSM and autogen where is no coverage of such data.

or

Osm Austria beta6.0 by PilotBalu

Download: <http://simheaven.com/experimental/>

HD Mesh Scenery v2 by alpilotx

Download: <http://www.alpilotx.net/downloads/x-plane-10-hd-scenery-mesh-v2/>

Europe Library von LyAvain,

Download: http://simheaven.com/?page_id=14

to see European instead of US buildings.

9. Credits

LAMINAR RESEARCH®

Ben Supnik

marginal

X-Plane®

[WED](#) (Version 1.2.1r3 verwendet)

[Sketchup-Plugin](#)

10. Betatester-Team

all members of AXDG.



Austrian X-Plane Design Group

11. License terms

This scenery is freeware and stays in the possession of the developer/s. Upon installation of the freeware the user accepts the terms of use. It is not allowed to upload the scenery or parts of it to other websites without the explicit permission in writing of the developer/s. Furthermore it is forbidden to use the scenery or parts of it on a commercial basis without the explicit permission in writing of the developer/s. Changes and modifications for the private use are allowed. But it is not allowed to share such changed or modified versions without the explicit written permission from the developer/s.

Apart from that the respective terms of copyright law are applicable.

The developer/s are not responsible for any malfunctions or possible failures of hard- or software in connection with this scenery. Under <http://forum.aerosoft.com/index.php?/forum/621-freeware/> the developer/s are available for questions or remarks regarding this scenery but cannot give the guarantee that this scenery will work on all computer systems.

Have fun with arrivals and departures at Zams

oe3gsu, Gerhard

