

LOAU - Stockerau pr XP10.11 V13001

Description:

The Airport is located abt. 25 km NNW from the center of Vienna, NW of the town "Stockerau". It is operated by <http://www.fsv2000.at/>
<http://www.fsv2000.at/flugplatzloau.htm>

There are two bigger and two small hangars and the main-building with the tower.

LOAU	Stockerau	+48,4102 +016,1925
Elevation	685 ft / 209m	
Runway	7/25 (75° / 255°)	Lenght: 800m / 620m Width: 18m Asphalt
Tower	122,85 MHz	
Lights	None	
TULLN Tower	118,9 MHz	
Nav aids	Stockerau VOR DME	113.0 MHz / 91° / 7.0 mi
	Tulln VOR DME	111.4 MHz / 52° / 10.4 mi
	Wagram VOR DME	112.2 MHz / 291° / 13.0 mi

Scenery:

This is an photo-realistic scenery of the Airport LOAU - Stockerau made of pictures taken there (many thanks to the people of <http://www.fsv2000.at>). You will find the runway, all three taxiway (incl. ATC) and the main buildings of the airport.

Tested with: XP10.11

This is my first scenery for XP, so please be patient and send your suggestions to me: oe3gsu@oevsv.at

I also included all sources. Please feel free to improve my work. But: ... please send me a short notice or the new sources. I want to learn from you!

Released in the public domain. Feel free to modify, improve, correct, and Have fun!

OE3GSU
Gerhard

All infos taken from: <http://www.fsv2000.at/flugplatzloau.htm>

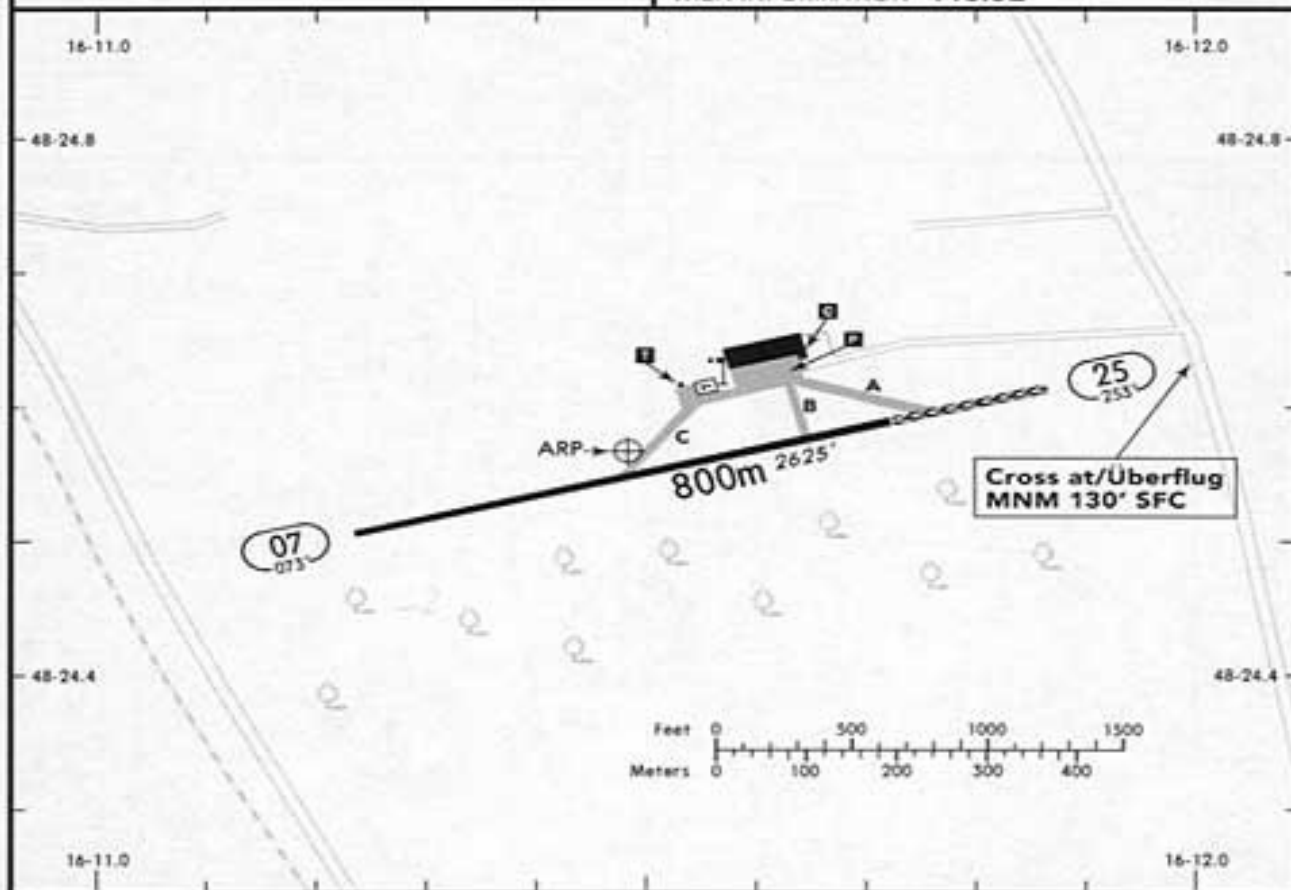
STOCKERAU
STOCKERAU
AUSTRIA

19-2 17 NOV 00

JEPPESEN

(FIS)

WIEN INFORMATION 118.52



RWY No	Dimension (m) - Surface	TORA (m)	LDA (m)	Strength	Lights
07 25	800 x 18 Asphalt	800 800	800 620	5 t SIWL (MAX 40 t AUW)	—

Due to AD location within Wien TMA, within MTMA Tulln, and since close to the transit routes see also chart WIEN 10-1V.

Cross road in front of THR 25 at MNM 130' SFC.

Caution: High tension line S of AD.

Pay attention to glider activity.

No traffic circuit flights after 1800LT.

Avoid built up areas especially Stockerau, Siemdorf, Hatztenbach, Oberolberndorf, and therefore keep well to the traffic circuit depicted on page 19-1.

Wegen der Lage des Platzes innerhalb der TMA Wien, der MTMA Tulln und da nahe der Durchflugrouten gelegen, siehe auch Karte Wien 10-1V.

Strasse vor THR 25 in MNM 130' SFC überfliegen.

Vorsicht: Hochspannungsleitung S des Platzes.

Auf Segelflug achten.

Keine Platzrundenflüge nach 1800LT.

Wohngebiete nahe des Platzes meiden, insbesondere Stockerau, Siemdorf, Hatztenbach, Oberolberndorf, und deshalb genaue Einhaltung der auf Seite 19-1 dargestellten Platzrunde achten.

